

# SHORELINE STATUS

Fripp Island - Shoreline Committee

Darryl Zoeckler - November 5, 2020

# THE SOUTH END

Skull Creek Inlet



Skull Creek Inlet - overall view



Prichard's Island - at Skull Creek Inlet



Prichard's Island - mouth of the inlet



Fripp Island - south end



Fripp Island - south end



Fripp Island - south end



# THE BEACH

Attaching Shoal and Tidal Pools



Attaching Shoal - low tide



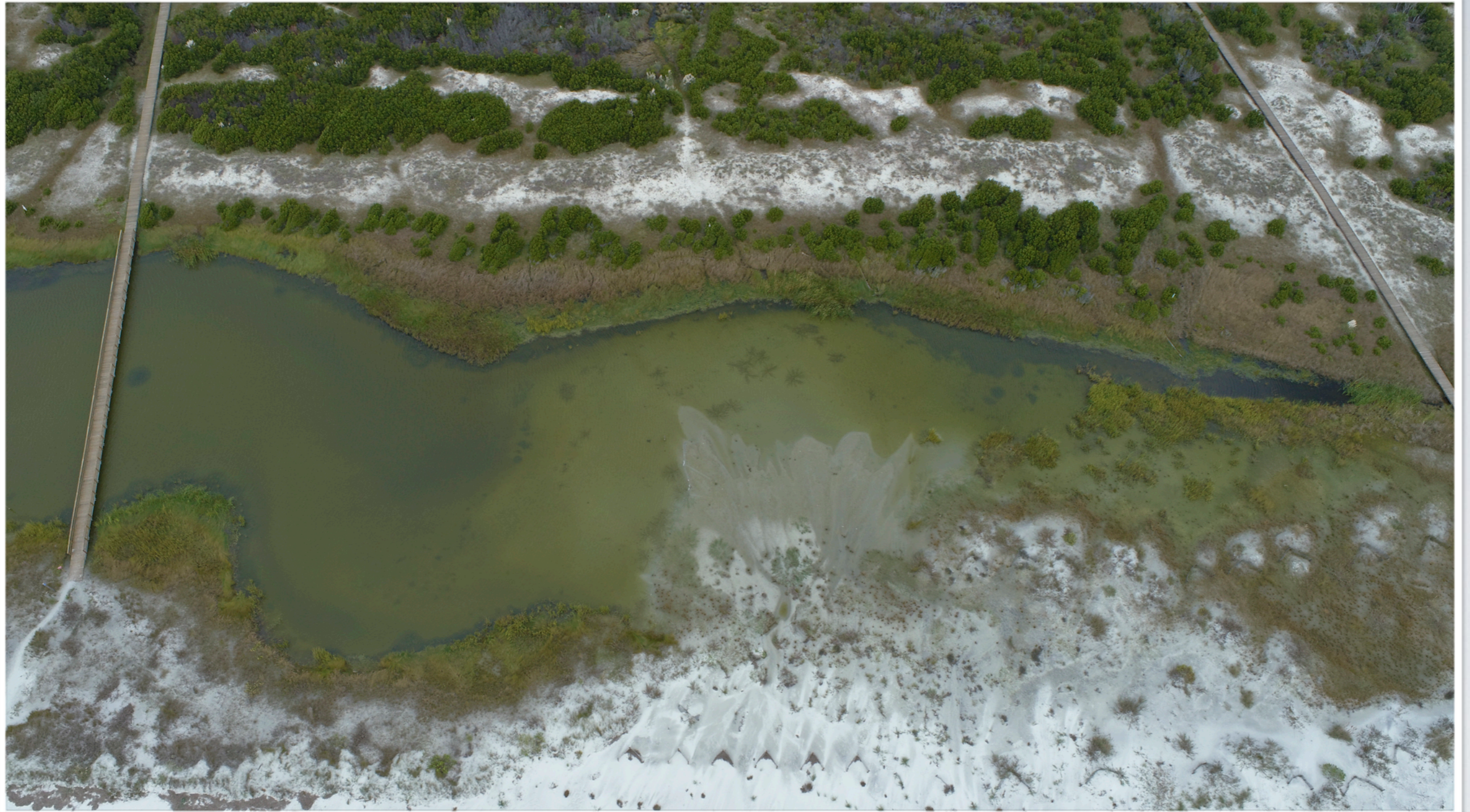
Attaching Shoal - low tide



Tidal Pool - at access 12 & 13



Tidal Pool - at access 12 & 13



Tidal Pool - detail



Tidal Pool - detail



Tidal Pool - detail





Tidal Pool - at access 1b



Tidal Pool - detail

# THE SALT MARSH

Salt Marsh behind River Club at Fripp Inlet



Salt Marsh - overall view of damaged areas



Salt Marsh Erosion - scouring effect



Salt Marsh Erosion - scouring effect

# HUNTING ISLAND

Sand build-up in the Fripp Inlet



Fripp Inlet - overall view of sand build-up





Fripp Inlet - the mouth of the inlet and Ocean Point



Fripp Inlet - looking towards Hunting Island



Fripp Inlet - view of the south end of Hunting Island



Fripp Inlet - the south end of Hunting Island



Hunting Island - deteriorating shoreline at south end

# AERIAL PHOTOGRAPHY

Images were captured via drone at low tide  
between October 13 and October 14, 2020